



Smart Manufacturing Opportunities Arise at Thailand

Collaboration to Connect Thailand's EEC initiative with the 'One Belt, One Road'

Newly Launched Natural Gas Distribution Services at WHA ESIE 2 Serving Industrial Growth in EEC

BOI Recorded Investment Promotion Applications with **25% above Last Year's Target**

WHA Industrial Estates Ready for **Thailand 4.0i**

MG Car Manufacturer Foresees a **Bright Future** at **WHA ESIE 2**

Works as an **"Ecosystem"** Makes it Easier to Find Skilled Labor for **K.W. Metal Work**



3 Executive Talk

4 Highlights

10 Customer Showcase

13 Newscast WHA Group

18 From the Club

19 Customer News

22 Social Contribution

WHA Group

Corporate Marketing Department
Tel: +66 (0) 2 719 9555 Fax: +66 (0) 2 719 9546
www.wha-group.com
marketing@wha-group.com

WHA Industrial Estates Ready for Thailand 4.0i

Innovation, robotics and automation have always been a top agenda of WHA Industrial Development.

*It is our vision to turn our industrial estates into smart manufacturing hubs that can capture as well as create valuable opportunities under the Eastern Economic Corridor project and the **Thailand 4.0** initiative.*

WHA's Memorandum of Understanding (MoU) with Bosch presents a significant milestone for closer collaboration and an exchange of knowledge and experience that will help Thailand enter an era of digital transformation.

Over the years, WHA Industrial Development has been attracting international and local companies thanks to our world class services and facilities, and our solid groundwork in the industrial estate and logistics business.

With Bosch's rich experience in digital technology, I am confident that we can play a vital role in accompanying Thailand into the digital era and opening up amazing possibilities through our partnership. This win-win collaboration is both timely and relevant in helping Thailand reach its goals. I am sure it will produce fresh synergies and drive a new wave of world-class innovations in the country's flourishing industrial sector.



David Nardone

Group Executive Industrial and International
WI IA Industrial Development PLC

WHA Industrial Development and Bosch Collaborate on Digital Transformation

Opportunities Arise at Thailand Smart Manufacturing 2018



WHA Industrial Development PLC and Bosch Thailand Ltd. recently organized and hosted hundreds of participants from the public and private sectors at Smart Manufacturing Day 2018 to demonstrate connected solutions for long-term development and application of digital technologies.

Helping industries improve in efficiency and productivity, smart manufacturing is a process that utilizes internet-connected machinery to monitor the overall production process. The epicenter of Thailand's growth in technology and smart manufacturing is the Eastern Economic Corridor (EEC), and Thai machine builders and manufacturers are increasingly engaged in implementing smart manufacturing systems and processes.

"In this environment, manufacturers need to increase their competitiveness by fine-tuning the production process in adding more automation and new technologies," explained Mr. David Nardone, Group Executive Industrial and International, WHA Industrial Development PLC. "WHA is strategically located in the EEC and at WHA's smart industrial estates with well-established infrastructure, we are ready to help realize the transformation of smart manufacturing in Thailand."

The net result is making manufacturing and logistics more efficient, profitable, flexible and **eco-friendly**.

In the picture: Mr. David Nardone (3rd left), Group Executive Industrial and International, WHA Industrial Development PLC and Mr. Joseph Hong (2nd right), Managing Director, Bosch Thailand, sign the collaboration agreement in the presence of Mr. Preeprem Malasitt, (left), Former Advisor, WHA Industrial Development PLC, Ms. Siyaphas Chantachairoj (2nd left), Director-Corporate Marketing, WHA Corporation PCL, and Mr. Martin Knoss (right), Regional President ASEAN, Robert Bosch Automotive Technologies (Thailand) Co., Ltd.

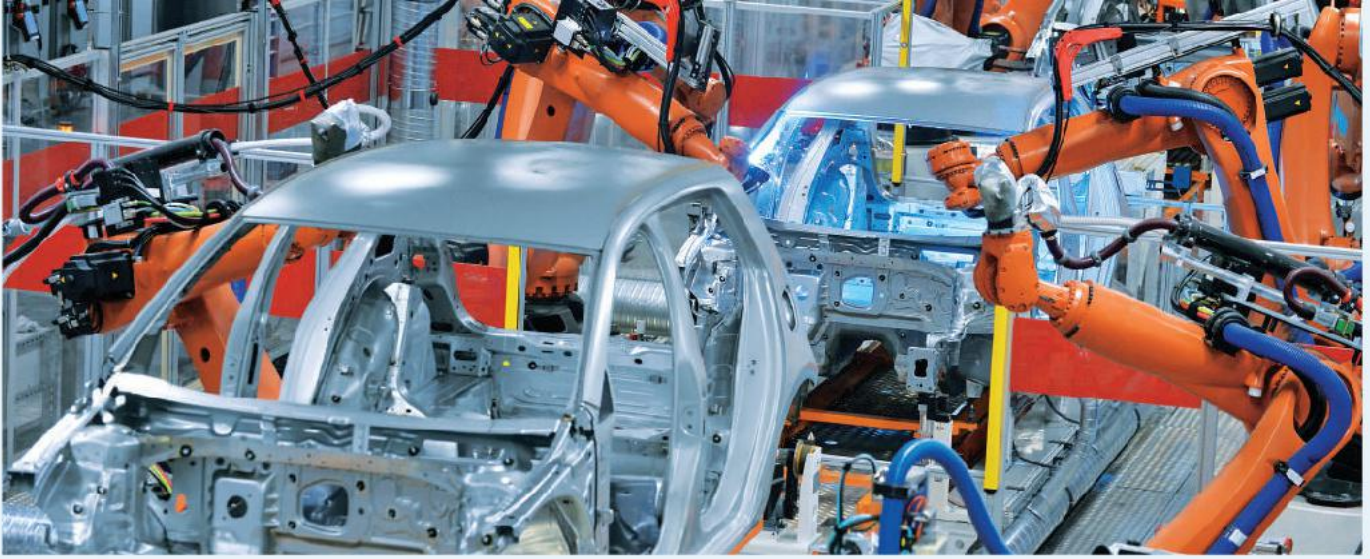


Featured technologies at Smart Manufacturing Day 2018 include systems integration of Industry 4.0 simulated with a live demo of a production line with real-time data collection, smart boiler, smart security systems, connected tools, and much more.

As a leading global supplier of technology and services, Bosch is capable of supporting and adding value to Thailand's next-generation industries, especially in the area of connectivity. The company has achieved momentum on technological expertise being a solutions provider as well as an active user of Industry 4.0 technology in its factories worldwide.

Mr. Joseph Hong, Managing Director of Bosch Thailand Ltd., said that the company is closely collaborating with the government and industry to accelerate adoption of smart manufacturing innovations in alignment with the Thailand 4.0 framework. With pro-active measures from the Thai government, a major priority is to upgrade the country's digital infrastructure and to promote a nationwide digital transformation across organizations.





BOI Recorded Investment Applications with a Value of over 900 Billion Baht in 2018, 25% above Last Year's Target

The Deputy Prime Minister of Thailand has revealed that the total amount of investment promotion application in 2018 reached 901,770 million baht, which exceeded the original target by 25%. Investment applications in the EEC accounted for more than 680,000 million baht. Largest-scale investment projects have been in the areas of petrochemical and electrical vehicle (EV) production.

Deputy Prime Minister Dr. Somkid Jatusripitak said after a meeting with the Board of Investment (BOI) on investment promotion policies in 2019 that last year BOI received 1,526 investment applications projects with a total value of Baht 901,770 million. Both the application number and the investment value were higher than those in 2017, by 3% and 43%, respectively.

In addition, the applications' value in 2018 was 25% higher than the set target of 720,000 million baht. As many as 84% of the application projects, worth 758,000 million baht in total, were in the targeted industries. Within that amount, 539,000 million baht was invested in the five new S-Curve industry sectors, which include digital, medical hub, biofuels and biochemicals, robotics and automation, and aviation.

A total value of 219,000 million baht was invested in the first S-Curve industry sectors; namely, agriculture and biotechnology, electrical and electronics, automotive and auto parts, tourism and food processing.

Ms. Duangjai Asawachintachit, BOI's Secretary General, said that in 2019

BOI will continue to focus on marketing activities targeted at investments that will help create more local value-added and bring higher technologies.

A series of support measures have been issued to attract these investments. Proactive FDI-seeking activities will be organized in key targeted areas Japan, China, Hong Kong, Taiwan, South Korea, the United States and Europe.

Source: This article was published at www.boi.go.th on 10 January 2019



WHA Corporation and Yunnan Energy Investment Group (YEIG) Sign Strategic MoU to Develop Logistics Cooperation to Link Thailand's EEC with China's Belt and Road Initiative



In the picture: Ms. Jareeporn Jarukornsakul (center), Chairman of the Board of Directors and Group CEO of WHA Corporation PCL, and Mr Liao Zhiwen (2nd from right), General Manager of Yunnan Energy Investment Logistics (YEIL), hold the MoUs in the company of Mr. Yang Wan Hua (2nd from left), Vice President of Yunnan Energy Investment Group (YEIG), Mr. Krailuck Asawachatroj (right), Chief Strategic Officer, WHA Corporation PCL, and Mr. Wang Jie (left), General Manager Assistant of Yunnan Energy Investment Logistic (YEIL), Manager of Strategic and Investment Center

WHA Corporation PCL, Thailand's leader in fully-integrated logistics and industrial facilities solutions, signed a Memorandum of Understanding (MoU) with Yunnan Energy Investment Group (YEIG) to develop business opportunities and strategic logistics cooperation between Thailand, Yunnan province in China, and Laos. The announcement was made during the China International Import Expo (CIIE) held in Shanghai between 5-10 November 2018.

As part of the Belt and Road Initiative (also known as 'One Belt, One Road') put forward by Chinese authorities, the MoU is named *The Belt and Road Memorandum of Strategic Cooperation of Comprehensive Logistic Joint Work*. WHA Corporation will work with Yunnan Energy Investment Logistics (YEIL), a subsidiary of Yunnan Energy Investment Group (YEIG), to enhance interaction between the two

partners' logistics and industrial sectors. Overall, the MoU covers cooperation in the areas of industrial properties, road and rail transportation, cold chain transportation, central Asia railway, the construction of an Asia-Pacific Model E-port Network, car trading, and more between China, Thailand and ASEAN countries.

"We are truly delighted to sign this Memorandum of Understanding with Yunnan Energy Investment Logistics," said Ms. Jareeporn.

"This creates a promising cooperation framework with our Chinese partner to connect Thailand's EEC initiative with the Belt and Road

project implemented by the Chinese government, opening tremendous opportunities for our two companies and our respective countries."

"This MoU with WHA Corporation is based on huge potential synergy," commented Mr. Yang Wan Hua, Vice President of Yunnan Energy Investment Group (YEIG). "We are confident that our vision, combined with that of WHA Corporation, fits in perfectly with the spirit of the 'One Belt, One Road' project that is based on peace and cooperation, openness and inclusiveness, mutual learning and mutual benefit," he declared.

Ready Built Factories

A Fast and Flexible Option for Investors

Over the years, more and more local and foreign investors have been showing keen interest in opening or expanding their business in our country. They choose Thailand because it gives them access not just to the local market, but also to the fast-growing markets in Southeast Asia and other parts of the globe.

However, the initial stages of setting up in a new site or a new country can be daunting. As 'Your Ultimate Solution Partner', WHA Industrial Development (WHA ID) addresses this issue by proposing Ready Built Factories (RBFs) that can be divided into three categories:



ATTACHED FACTORIES (500 to 2,500 sq.m.)

are well-suited for manufacturing activities or industrial services, such as R&D

DETACHED FACTORIES (2,500 to 9,900 sq.m.)

offer more flexibility and allow future expansion without interrupting the manufacturing process

BUILD-TO-ORDER FACTORIES (7,000 to 10,000 sq.m)

where buildings can be constructed in close collaboration with WHA engineering and design teams

Ready Built Factories offer customers maximum flexibility, a quick market entry with reasonable initial costs, plus all the advantages provided by WHA ID's world class industrial estates in general and duty-free zones.

For instance, some successful WHA customers in the automotive industry, like Futuris and SAIC, started their operations in Thailand in WHA Ready

Built Factories, before moving to larger manufacturing facilities in WHA Eastern Seaboard Industrial Estate 2.

Such RBFs are currently available in WHA industrial estates located within or in proximity to the fast-developing Eastern Economic Corridor (EEC), close to U-Tapao and Suvarnabhumi International airport, as well as Laem Chabang deep seaport.

Our Customer Development teams, proficient in English, Chinese or Japanese, and benefiting from WHA's over 30 years of experience in industrial development, are at our customers' disposal to discuss their initial investment or expansion plans.

If you wish to learn more about our Ready Built Factory, please send your inquiry to marketing@wha-group.com or call us at 02 719 9555.

WHA Investors Club Raises Over 200,000 THB at Annual Charity Golf Tournament

Top BOI Official and Auto Industry Expert Share Their Insights

Another successful Investors Club Meeting and Charity Golf Event was hosted by WHA Industrial Development PLC last November 2018, with over 100 participants at the sprawling grounds of Pattana Golf & Sports Club in Chonburi.

The day started with an opening speech by Mr. David Nardone (6th left), Group Executive Industrial and International of WHA Industrial Development PLC, followed by an informative meeting with the Thailand Board of Investment (BOI) Deputy Secretary General, Mr. Narit Therdsteeerasukdi (5th left), who gave a comprehensive update of BOI's current investment promotion policy. This was followed by an enlightening talk on the automotive industry and the outlook of electric vehicles in the region by Mr. Jessada Thongpak (4th left), Associate Manager-ASEAN and senior analyst of automotive at IHS Markit. Everyone listened attentively as Mr. Tanin Subboonrueng (4th right), Vice President of Industrial Estate Operations and Maintenance, gave an update on WHA's infrastructure and services.





After lunch, golfers proceeded to the golf course for a shotgun start tee off for an afternoon of sportsmanship and camaraderie. Winners from each flight, as well as from the exciting challenges like 'nearest the pin' and the lucky draw were announced during dinner.

Over 200,000 THB was raised for Nong Rai School in Rayong and WHA's other charity projects. This amount was matched by WHA, encouraging donors and knowing their contribution counted double for a good cause.



"It was a very successful fundraiser," said Mr. David Nardone, Group Executive Industrial and International of WHA Industrial Development PLC.

"Our customers, partners and the rest of the WHA Industrial Development community were eager to raise money for good causes.

This event has grown into a special fun moment to look forward to every year."

A huge thank you to guest speakers who provided their key insights in the morning session, and to our sponsors and golfers who participated and helped make this year's charity golf tournament an exciting and successful event.



Hitachi Transport System Vantec (Thailand) Ltd.

Inspiring the Next Optimization and Streamlining in Logistics

Modern logistics is becoming more complex and demand for technically difficult international transport is also increasing.

Hitachi Transport System Vantec (Thailand) Ltd. is a local entity of Japanese leading logistics company Hitachi Transport System Ltd. The group's parent organization Hitachi Ltd. is known for its culture of artisanship and meticulous service, and the company prides itself on delivering factory equipment and materials safely to all clients.

The company entered the Thai market in 1989, and in 2016 started a cross-border consolidated service. The growing Southeast Asian market is an important strategic location, and the company's business can be divided into three main parts: heavy transport, freight-forwarding, and third party logistics. Heavy transport has been Hitachi's core business since its establishment in 1950, and the company

handles technically difficult transport tasks, from transportation of electrical power plants and other kinds of plants through to installment.

Modern logistics is becoming more complex and demand for technically difficult international transport is also increasing. The company has built a huge global network with approximately 400 base locations and provide comprehensive freight-forwarding services, in Japanese language, from customs clearance to compliance of laws and regulations. Third-party logistics (3PL) aims to achieve optimization and streamlining of the whole logistics process, which can cover a broad range of functions, from storage at warehouses to transport, loading, import/export, and logistics consultation.



More businesses are now using specialists to optimize multi-layered logistics operations.

When relocating headquarters in 2012, the company received a lot of assistance from WHA Group. "These included proposals that matched well with the business base strategy," Managing Director Mr. Mitsushika Nagano explained, "and they impressed us with their kind and polite attitude, which led to the start of our business relationship." More recently, WHA proposed to install solar panels on the roof of their logistics center at Lam Luk Ka, which was very welcome, as conserving energy and the global environment is an important issue for the company.

Logistics is continually evolving in Thailand and Hitachi is also focusing on the e-commerce market where businesses are seeking better logistics services, particularly organizations unable to lease warehouses or have limited delivery methods. Robotization and automation are in sight for the future, and the company will stay agile in response to demand for new logistics and changes in the market.

Contact information

Mr. Mitsushika Nagano
Managing Director
Hitachi Transport System Vantec
(Thailand), Ltd
Tel: +66 (0)2 337 2086
www.hitachi-tstv.com/en/

SAIC MOTOR-CP

The MG Car Manufacturer Foresees a Bright Future at WHA ESIE 2



The first manufacturing joint-venture between Thailand and China, SAIC Motor-CP was established in February 2013 at the WHA Eastern Seaboard Industrial Estate 1 (WHA ESIE 1), before moving in August 2017 to a brand-new 700,000 sq.m. plant at the WHA Eastern Seaboard Industrial Estate 2 (WHA ESIE 2).

With a workforce of approximately 1,000 people, the company currently manufactures 4 MG models (new MG3, MG5, MG GS and MG ZS). From a mere 280 units in 2014, SAIC Motor-CP expects to produce 28,000 units this year and 50,000 units in 2019, representing half the plant's production capacity. "We plan to make this plant the production center of all right-hand drive MG cars, or 30% of the world market, so we will export

to other countries such as Indonesia, Malaysia, Japan and New Zealand," explained Mr. Suroj Sangsnit, Executive Vice-President of SAIC Motor-CP.

According to Mr. Athit Tangwattanasat, Manufacturing Engineering Deputy Director, who has been with SAIC Motor-CP since its inception, the choice of WHA ESIE 2 for the new plant was based on several criteria. "The estate's easy access from routes 331 and 3138, its location close to Bangkok, to the Suvarnabhumi airport and to the Laem Chabang Deep Sea Port were major advantages. Being one of the first occupants of WHA ESIE 2 was also a plus as it made it easier to meet our plant's strict regulations and specifications, especially in terms of environment protection. WHA's great experience as a long-term promoter of Thailand's

automotive cluster helped significantly," he added.

At WHA ESIE 2, SAIC Motor-CP finds the necessary utilities for its plant. On December 1, 2018, the MG car manufacturer became the first customer of GULF-WHA-MT Natural Gas Distribution, a newly-established joint-venture between WHAUP, GULF and MITG for the supply of natural gas, the plant's main energy source. The company is increasing its electricity supply, with the installation by WHAUP of new substations, and it plans to set up solar rooftops on the parking areas, where MG cars are stored before delivery to the company's 120-dealer network all over Thailand. "Our partnership with WHA is certainly for the long-term", concluded Mr. Suroj Sangsnit.



Contact Information

Mr. Suroj Sangsnit
Executive Vice-President
SAIC Motor - CP Co., Ltd.
Tel: 033 009000
www.mgcars.com



บริษัท เค. ดับบลิว. เมทัลเวิร์ค จำกัด (มหาชน)
K. W. METAL WORK PUBLIC COMPANY LIMITED



K.W. Metal Work

WHA Eastern Seaboard Works as an Ecosystem that Makes it Easier to Find Skilled Labor

Established in 2009, K.W. Metal Work PCL is a leading manufacturer of agricultural equipment and spare parts, including disc ploughs, chop ploughs, furrow wheels and dozer blades. With its headquarters in Bangkok, the company's manufacturing facility is located at the Eastern Seaboard Industrial Estate (Rayong) (ESIE).

Equipped with hi-tech machines such as 400-ton screw presses and welding robots, K.W. Metal Work employs about 100 people, including R&D engineers and metallurgy specialists. ISO 9001 certified, it is an original equipment manufacturer (OEM) for Siam Kubota Corporation, an important maker of agricultural machinery, and it also sells its products to first-tier suppliers, retailers and wholesalers, both in the domestic and international markets.

In October 2018, K.W. Metal Work was introduced in the Market for Alternative Investment (MAI) under the "KWM" symbol.

For Mr. Ekan Vanagosoom, the company's Chief Executive Officer, one of the key advantages of being located at ESIE is the possibility to find skilled labor in the industrial estate's neighborhood. "With our industry's increasing automation and use of advanced technologies, we need qualified engineers and technicians who are able to handle these sophisticated machines and robots, and we found that ESIE works as an "ecosystem" which makes it easier to find these people" he said.

His son, Mr. Ukrit Vanagosoom, who spent 10 years in Germany to study

and do research on metallurgy, can explain at length how the consistent quality of steel depends on the high precision of the production process. "During the heat treatment phase to harden the steel, a tiny percentage variation of one ingredient such as carbon may cause a huge difference in terms of product quality," he emphasized.

According to Mr. Ekan and Mr. Ukrit, another key advantage provided by ESIE is the fact it provides everything the plant needs, from air pollution control to water treatment to energy supply such as electricity and natural gas. "Gas is quicker than electricity to reach high temperatures and we appreciate that WHA can provide everything we need," they added.



Contact Information

Mr. Ekan Vanagosoom
Chief Executive Officer
K.W. Metal Work PCL
Tel: 02-391-3030
www.kw-metalwork.com

WHA Industrial Development Joins Discussions for EEC Labour Administration Center

WHA Industrial Development PLC, represented by Mr. Preeprem Malasitt, (right), Former Advisor, joined the discussions on the implementation of the EEC Labour Administration Center, chaired by Labour Minister

Police General Adul Sangsingkeo (2nd right). The Center's mission is to manage labor data in the EEC zone and to serve as a one-stop center for companies that employ foreign workers who need visas and permits.



ESIE and WHA EIE Receive Eco Industrial Town Awards and Recognition



ESIE receives Eco Industrial Town Award

For the fifth consecutive year, Eastern Seaboard Industrial Estate (Rayong) (ESIE), developed by WHA Industrial Development PLC received an Eco Industrial Town Award in the Eco-Champion category. The Eco Innovation Forum 2018 Toward the Smart Eco-city and Sustainable Urbanization was co-organized by the Digital Economy and Society Ministry, the Industry Ministry and the Federation of Thai

Industries. ESIE has been recognized for its strong commitment in preserving the environment in line with the sustainability concept.

WHA Eastern Industrial Estate (Map Ta Phut) (WHA EIE) was given the distinction of Eco Industrial Town Award in the Eco-Champion category, for its outstanding awareness of environmental conservation and its proactive role in the industrial scenario, in accordance with Thailand 4.0 policy.



WHA EIE receives Eco Industrial Town Award

In the far left picture: Mr. Tanin Subboonveng (center left), Vice President-Industrial Estate Operations and Maintenance, WHA Industrial Development PLC, receives the plaque on behalf of ESIE from Ms. Somchint Pilouk (center right), Governor of the Industrial Estate Authority of Thailand (IEAT), in the presence of Ms. Cattleya Silaratana (far left), Director, Office of Eastern Seaboard Industrial Estate (Rayong), and Mr. Supant Mongkolsuthree (far right), Chairman of the Federation of Thai Industries (FTI).

In the left picture: Mr. Rachakit Klanprom (center left), Maintenance and Operations Manager of WHA Eastern Industrial Estate Co., Ltd. and Mr. Chakart Potanasri (far left), Director, WHA Eastern Industrial Estate Co., Ltd., accept the award from Governor of IEAT Ms. Somchint Pilouk (center right) and Chairman of the Federation of Thai Industries Mr. Supant Mongkolsuthree (far right).

WHA ESIE 1 and WHA CIE 1 Receive EIA Monitoring Awards 2018

Two WHA industrial estates were distinguished at the recent EIA (environmental impact assessment) Monitoring Awards 2018 in Bangkok. WHA Eastern Seaboard Industrial Estate 1 (WHA ESIE 1) received an Outstanding Award, highlighting the company's solid environmental management, in line with the EIA 2018 report. WHA Chonburi Industrial Estate 1 (WHA CIE 1) was recognized with a Complimentary Award for its strict environmental compliance as defined by the 2018 EIA report. Both estates are operated by WHA Industrial Development PLC.



Mr. Rakphol Kangnoy (left), Director-Industrial Estate Operations, WHA Industrial Development PLC, receives the Outstanding Award from Gen. Surasak Kanchanarat (right), Minister of Natural Resources and Environment, on behalf of WHA ESIE 1.



Mr. Nirut Somboonsup (left), Senior Manager, Industrial Estate Operations, WHA Industrial Development PLC, accepts the Complimentary Award from Gen. Surasak Kanchanarat (right), Minister of Natural Resources and Environment, on behalf of WHA CIE 1.

WHA Group Hosts Workshop to Boost Thailand's Aerospace Industry



WHA Industrial Development PLC, a subsidiary of WHA Group, in association with the Italian Aerospace Network (IAN), Thai European Business Association (TEBA) and Thai-Italian Chamber of Commerce (TICC) recently organized

the workshop *Moving Forward in the Aerospace Industry* at the Eastern Seaboard Industrial Estate (Rayong). Ms. Siyaphas Chantachairoj, Director -Corporate Marketing, WHA Corporation PCL, welcomed the participants who

were given exposure to the aerospace market in China and Asia, trends and opportunities in the Thai aerospace market, and BOI incentives for new investors in this growing industry.

Among the speakers were Mr. Nantawoot Aksornkaew, Investment Promotion Officer (Professional Level), Thailand Board of Investment; Mr. Karolus Karni Lando, Certification Manager, RINA; Mr. Andrea Spiriti, President, Italian Aerospace Network (IAN), and Mr. Hugh Vanjiprabha, Managing Director, Rolls-Royce (Thailand). This workshop was held as part of WHA's strategy to develop Thailand's aerospace industry.

WHA Group Joins Roundtable Meeting with Thai-Korean Automotive B2B Meeting



Ms. Siyaphas Chantachairoj (2nd left), Director-Corporate Marketing, WHA

Corporation PCL, recently welcomed and presented at the meeting entitled Automotive Cluster of Thailand in the EEC Pillar for a group of delegates representing Korean automotive companies and the Korea Automotive Technology Institute (KATECH). Co-organized by the Thailand Board of Investment (BOI) (Seoul Office) and KATECH, the Korean delegates and investors were in town for an update

of the automotive industry outlook in Thailand and to seek business opportunities, especially for electric vehicles. Ms. Siyaphas also provided her Korean visitors with a comprehensive overview of Thailand's automotive industry and WHA's readiness to attract investments from foreign automotive manufacturers, in line with the EEC initiative.

WHA Group Welcomes Chinese Delegation and Beijing Investors Business Mission to WHA Industrial Estates as Special Promoted Zones under EEC

WHA Group recently welcomed a group of Chinese investors who came to Thailand to study investment opportunities in the government's Eastern Economic Corridor (EEC) and to attend the Thailand-China Forum 2018: Strategic Partnership through the Belt and Road Initiative and the EEC. Ms. Ladda Rojanavilavudh, Vice President-Industrial Estate Customer Development, WHA Industrial Development PLC received the visitors at Eastern Seaboard Industrial Estate (Rayong) (ESIE) and WHA Eastern Seaboard



Industrial Estates 1 & 2, home of major Chinese investors such as SAIC Motor-CP Co., Ltd. manufacturer of MG cars and Linglong tires, and Shaanxi's Fast Auto Drive. Ms. Ladda also provided the delegates with an overview of WHA Group's world-class

services and facilities available for its customers.

Another group of Chinese investors and representatives from the Thailand Board of Investment (Beijing Office) visited the EEC to explore business opportunities in Thailand. Warmly received by Ms. Ladda, the group was given an extensive tour of WHA's industrial estates at ESIE, WHA ESIE 1 and WHA ESIE 2.

In the top picture: The Chinese delegation received a warm welcome from Ms. Ladda Rojanavilavudh (1st right), Vice President-Industrial Estate Customer Development, WHA Industrial Development PLC and Ms. Siyaphas Chantachairoj (5th left), Director-Corporate Marketing, WHA Corporation PCL.

In the left picture: Members of the Beijing investment group on tour of WHA Group's industrial estates with Ms. Ladda Rojanavilavudh (2nd right, 2nd row), Vice President-Industrial Estate Customer Development, WHA Industrial Development PLC.

Korean Business Delegation Visits WHA Industrial Estates in EEC's Special Promoted Zone



In celebration of the 60th anniversary of Thai-Korean relations, the Seoul office of the Thailand Board of Investment and ASEAN-KOREA Centre led a delegation of Korean businessmen and investors on a visit to the Eastern Economic Corridor. Ms. Ladda Rojanavilavudh, Vice President-Industrial Estate Customer Development, WHA Industrial Development PLC, and Ms. Siyaphas Chantachairoj,

Director-Corporate Marketing, WHA Corporation PCL, gave the group a warm welcome to WHA Eastern Seaboard Industrial Estates, where they visited manufacturing plants equipped with the latest industrial robots and automation systems, and observed WHA's industrial estates development and services, as well as opportunities for foreign investment.

AMCHAM Thailand Executives Visit ESIE (Rayong) and WHA ESIE1



Ms. Siyaphas Chantachairoj (2nd left), Director-Corporate Marketing, WHA Corporation PCL, recently welcomed Ms. Heidi Gallant (center), Executive Director, and other officers of AMCHAM Thailand to the Eastern Seaboard Industrial Estate (Rayong) and WHA Eastern Seaboard Industrial Estate 1 (WHA ESIE 1), home to major American companies including Ford Motor, General Motors, Jelly Belly Candy, Kellogg's, Acushnet Titleist and FMC Chemical. During the comprehensive tour of the environmentally-friendly premises, world-class facilities and factories, the group also discussed investment opportunities that could bring in more international investors to the automotive cluster and WHA industrial estates.

WHA Group Welcomes Matthews Asia at ESIE (Rayong) and WHA ESIE 1



Representatives from investment specialist Matthews Asia, a subsidiary of Matthews International Capital Management, Mr. David Dali (3rd right), Client Portfolio Strategist and

Mr. Sriyan Pietersz (2nd right), Investment Strategist, recently visited Eastern Seaboard Industrial Estate (Rayong) and WIA Eastern Seaboard Industrial Estate 1 (Automotive Cluster of Thailand). They were welcomed by Ms. Siyaphas Chantachairoj (right), Director-Corporate Marketing, WIIA Corporation PCL, who gave them a comprehensive tour of the world-class facilities and manufacturing plants on site.

WHA Industrial Development Welcomes Zhejiang Province Business Delegation



Ms. Ladda Rojanavilavudh (4th right, front row), Vice President-Industrial Estate Customer Development at WHA Industrial Development PLC, together with Ms. Siyaphas Chantachairoj (5th right, front row), Director-Corporate Marketing, WHA Corporation PCL, welcomed a delegation of Zhejiang officials and entrepreneurs led by the China Council for the Promotion of International Trade, Zhejiang Provincial Committee. The group toured the automotive cluster comprised of WHA Chonburi Industrial Estate 2 and WHA Eastern Seaboard Industrial Estate 2, to explore investment opportunities and promote economic cooperation between China and Thailand.



WHA Welcomes Korea Automotive Technology Institute (KATECH)

An enthusiastic team from the Korea Automotive Technology Institute (KATECH) recently paid a visit to the WHA Industrial Development headquarters in Bangkok to learn more about auto manufacturing in Thailand's Eastern Corridor Economic (EEC). Ms. Siyaphas Chantachairoj (3rd right), Director-Corporate Marketing, WHA Corporation PCL, was on hand to present WHA's fully integrated services and infrastructure ready to support foreign investments in Thailand's vibrant automotive sector, in line with the EEC policy.

WHA Group Welcomes Cambodian Government Delegation to Thailand's Automotive Cluster



Ms. Siyaphas Chantachairoj (7th right), Director-Corporate Marketing, WHA Corporation PCL, welcomed a delegation of Cambodian officials led by BOI Thailand officers to the Eastern Seaboard Industrial Estate (ESIE) and WHA Eastern Seaboard Industrial Estate 1 (WHA ESIE 1). After a brief presentation of the industrial estate development, the group was given a tour of vehicle and automotive parts manufacturing facilities strategically located in the automotive cluster of the EEC.

US Embassy Economic Section Officials Visit ESIE (Rayong) and WHA ESIE 1



Ms. Siyaphas Chantachairoj (3rd left), Director-Corporate Marketing, WHA Corporation PCL, took officials from the Economic Section of the US Embassy to Thailand on a tour of Eastern Seaboard Industrial Estate (Rayong) and WHA Eastern Seaboard Industrial Estate 1, known as Thailand's automotive cluster. Mr. Douglas Apostol (center right), Counselor for Economic Affairs, Mr. Matthew Fullerton (2nd right), Economic Officer, and Mr. Nopparat Chaichalearmmongkol (right), Economic Specialist, visited these industrial estates, which are home to major American automotive giants including General Motors and Ford Motor, alongside other key companies across various sectors.

New Jiangsu Delegation Visits ESIE (Rayong) and WHA ESIE 1



Ms. Ladda Rojanavilaiyudh (6th right), Vice President-Industrial Estate Customer Development, WHA Industrial Development PLC, welcomed another delegation of officials and potential investors from the southern Chinese province of Jiangsu, and gave them a tour of Eastern Seaboard Industrial Estate (ESIE) (Rayong) and WHA Eastern Seaboard Industrial Estate 1 (WHA ESIE 1). The site visits aimed to deepen ties and to enhance economic and investment cooperation between Thailand and Jiangsu province.

WHAUP Collaboration with GULF-MITG Launches Natural Gas Distribution Services in WHA ESIE 2 Serving Industrial Growth in EEC



construction and expected to be completed within the first quarter of 2019, while the joint venture is conducting feasibility studies and an environmental impact assessment of WHA Eastern Seaboard NGD 3 Project (WHA NGD 3). These results are expected to be known this year and all projects are prepared to serve industrial growth in the EEC.

In the picture: Mr. Wisate Chungwatana (2nd from right), Chief Executive Officer of WHA Utilities and Power PLC, Mr. Boonchai Thirati (2nd from left), Senior Executive Vice President & Chief Operating Officer of Gulf Energy Development Public Company Limited, Mr. Masaaki Nishimura (right), Chief Representative Tokyo Gas Co., Ltd. Thailand Representative Office, Mr. Tsoyoshi Sakahashi (left), Managing Director of Mit-Power Capitals Thailand Ltd. (MITSUI)

Mr. Wisate Chungwatana, Chief Executive Officer of WHA Utilities and Power PLC (WHAUP) announced that WHA Eastern Seaboard NGD 2 Project (WHANGD2) has begun commercial operation since 1 December 2018 by distributing natural gas to its first customer in WHA Eastern Seaboard Industrial Estate 2 (WHA ESIE 2). The first project of a business collaboration among leading energy companies WHAUP, Gulf Energy Development PCL (GULF) and MITG (Thailand) Co., Ltd. the joint venture company has been named GULF WHA MT Natural Gas Distribution Co., Ltd. (Gulf WHA MT). It will provide natural gas distribution services to support the energy demand of industrial users at WHA ESIE 2 in Sriracha district, Chonburi province, in the Eastern Economic Corridor (EEC).

Ms. Yupapin Wangviwat, Senior Executive Vice President of GULF, said the project has an initial investment of approximately 198 million THB. It has natural gas distribution capability at 2,000,000 million BTU per year. The company has signed a 10-year gas sale and purchase agreement with PTT PLC, as well as a 10-year gas sale and purchase agreement with the customer, each renewable every 10 years. WHANGD2 has already obtained the natural gas retail license

and the natural gas transmission license from the Energy Regulatory Commission.

“WHANGD2 is the first natural gas distribution project achieving a commercial operation date (COD) by Gulf WHA MT,” said Ms. Yupapin. “The second project is currently under construction and expected to commence the COD as planned in April 2019, while studying other new projects in the pipeline.”

Mr. Wisate added that the natural gas distribution services of WHANGD2 is WHAUP's 3rd business, in line with strategies to expand the utilities and power services. The first customer is SAIC Motor-CP Co., Ltd. using 100 MMBTU/day at the initial stage. At present, the WHA Eastern Seaboard NGD 4 Project (WHANGD 4) is under

“WHAUP is confident that the natural gas distribution service in WHA Industrial Estates is a good business, as natural gas is clean energy with a reasonable price. Natural gas is primary energy for industrial use now and in the future, replacing fuel oil and diesel. In addition, the natural gas distribution service can help reduce road transport risks, reduce traffic in the area, and is very safe to transport. Moreover, it enhances the stability of customer energy consumption since NGD2's pipeline system is connected with PTT's main natural gas pipeline system. Also, the majority of WHA Industrial Estate's customers are large manufactures with long-term investment. Thus, the natural gas distribution service can very well serve their energy demand growth in the future,” said Mr. Wisate.



WHAUP and ZF Lemforder Sign Agreement to Install Solar Rooftop



WHA Utilities & Power PLC received an agreement from ZF Lemforder (Thailand) Co., Ltd. to install solar rooftop panels on ZF's factory at Eastern Seaboard Industrial Estate (Rayong) with a capacity of 0.8 MW. Mr. Thinus Steyn (middle right), Head of Region South East Asia, India and Pacific of the Chassis Systems Business Unit and Mr. Wisate Chungwatana (middle left), Chief Executive Officer of WHA Utilities and Power PLC (WHAUP) celebrated the Solar Rooftop Power Purchase Agreement signing together with Mr. Punrapee Noparumpa (left) Director, Power Business Development, WHA Utilities and Power PCL, and Mr. Sirachat Samaikul (right), Plant Manager, ZF Lemforder (Thailand) Co., Ltd. The Purchase Agreement reflects ZF's intention towards environment protection, with the Clean Energy concept and also cost savings. The COD of the project is expected by April, 2019 respectively.

The ZF Lemforder (Thailand) Co., Ltd. plant is located in Eastern Seaboard Industrial Estate (Rayong) of WHA Industrial Development, covering an area over 12 Rai. ZF is committed to clean energy, which is the reason why WHAUP has offered to install solar rooftop. "The solar energy contributes to environmental protection and to reduce the cost of energy in our factory as well.", said Plant Manager, Mr. Sirachat.

"WHAUP is responsible for the investment of the solar panel system, its engineering, permitting and installation as well as its operation and maintenance. The solar system is expected to supply up to approximately 49% of ZF Thailand's current energy consumption and offset CO2 emissions by 550 tons per year. "We are delighted to collaborate with WHAUP in this exciting project," declared Mr. Steyn from ZF's Chassis Systems Business Unit. "This fits in perfectly with our group's environmental objectives and we are grateful to WHA Industrial Development and WHAUP for giving us the opportunity to enhance our factory with this "win-win" agreement", he concluded.

"The installation of 0.8 MW-Solar Rooftop project with ZF Lemforder (Thailand) Co., Ltd. in ESIE is one of the Company's Solar Rooftop service to customers within WHA's industrial estates and other industrial estates." said WHAUP CEO Mr. Wisate. "At present, WHAUP already has 9 solar rooftop power plants in operation with total capacity of 4.8 MW. Prospects for growth in solar rooftop are favorable as industrial customers are becoming more and more inclined towards the use of clean energy, while recognizing its economic benefits in saving electricity cost."

FROM THE CLUB ●●

WHA Industrial Development HR Club Rally for Teamwork and Raising Funds



WHA Industrial Development PLC recently co-organized and joined the HR Club Rally for staff and management of Eastern Seaboard Industrial Estate (ESIE), with the aim to raise funds for purchasing medical equipment for Pluak Daeng Hospital. From the starting point at ESIE Plaza 1 in Rayong to the finish line in Khao Yai, all participants enjoyed the enthusiasm, camaraderie and team spirit that reigned throughout the day. This was followed by fun-filled activities in the evening that brought people closer together. The event was organized to highlight the value of teamwork, trust and working together towards a common goal.

WHAUP Solar Rooftop



Saving upto
25% on Electricity Bill
ZERO Investment
Free Long-term Service

061 394 2111
02 719 9559

WHA Utilities and Power Public Company Limited

solarroof@wha-up.com
www.wha-up.com



robatherm Signs WHA Chonburi Industrial Estate 2 Land Purchase Contract

The German-based air handling company robatherm recently finalized a land purchase agreement with WHA Industrial Development PLC to build a cutting-edge manufacturing plant in Thailand's Eastern Economic Corridor (EEC). Strategically located in WHA Chonburi Industrial Estate 2, the new technically-advanced robatherm facility will help boost the company's growth with the development of tailor-made solutions and products for its growing clientele in the region.



In the picture: Ms. Jareeporn Jarukornsakul (4th left), Chairman and Group CEO of WHA Corporation PCL, signed a land purchase contract with Mr. Philipp Baumeister (3rd right), Director of robatherm. Also present were Mr. Winyoo Saisanit (2nd right), Deputy Managing Director of robatherm; Mr. David Nardone (3rd left), Group Executive Industrial and International; Mr. Vivat Jiratikarnsakul (2nd left), Chief Operating Officer, Industrial and International; Ms. Ladda Rojanavilavudh (far left), Vice President, and Mr. Apisak Kamwon (far right), Assistant Director, of Industrial Estate Customer Development at WHA Industrial Development PLC.



In the picture: Mr. David Nardone (3rd left), Group Executive Industrial and International, WHA Industrial Development PLC, and Mr. Kazuyoshi Matsuura (2nd right), Corporate Officer, Division Manager-Synthetic Rubber of Zeon Corporation, present the signed purchase agreement. Also present were Mr. Shiro Mizukai (right), Managing Director, Zeon Chemicals Asia; Ms. Ladda Rojanavilavudh (2nd left), Vice President - Industrial Land Customer Development, WHA Industrial Development PLC.

Zeon Chemicals Asia Land Purchase Deal with WHA Industrial Development

Zeon Chemicals Asia (ZCA), a new Thai subsidiary of the Japan-based leading industrial chemicals manufacturer Zeon Corporation, recently signed a land purchase contract with WHA Industrial Development PLC. Located in WHA Eastern Industrial Estate (Map Ta Phut) in Rayong province, the future plant will be an extension of its successful operations that started in Thailand over 20 years ago.

Jelly Belly Finalizes Ready Built Warehouse Lease Agreement at ESIE

Jelly Belly Candy Company (Thailand) Ltd., a subsidiary of US-based Jelly Belly Candy Company, the world-leading manufacturer of jelly beans and candies, recently signed a lease agreement contract with WHA Industrial Development PLC for a ready-built warehouse at the Free Zone of Eastern Seaboard Industrial Estate (Rayong). With a total area of 3,200 m², the new facility will help expand the company's current operations and drive its solid growth in the global market.

In the picture: Mr. Herman G. Rowland, Jr. (4th left), Vice President Managing Director of Jelly Belly Candy Company (Thailand) Ltd, recently finalized the lease agreement with Ms. Jareeporn Jarukornsakul (3rd right), Chairman and Group CEO of WHA Corporation PCL. Also present during the signing ceremony were Mr. Craig Blacklock (3rd left), Chief Engineer, Jelly Belly Candy Company (Thailand) Ltd; WHA Industrial Development PLC executives for Industrial and International, Mr. David Nardone (2nd right), Group Executive; Mr. Vivat Jiratikarnsakul (far right), Chief Operating Officer; and Ms. Siyaphas Chantachairoj (far left), Director-Corporate Marketing, WHA Corporation PCL.



Advanex Signs WHA Eastern Seaboard Industrial Estate 2 Land Purchase Deal

Advanex (Thailand) Announce New Factory at WHA Eastern Seaboard Industrial Estate 2 (WHA ESIE 2) have confirmed that would established a new factory in WHA ESIE 2, the new factory area about 21,200 sqm.

The new factory is part of their ambitious growth plans that involves increasing production capabilities and market share across the globe. The plant is located on WHA ESIE 2 and benefits from being 54 km from the nearest U-Tapao airport, 103 km from Suvarnabhumi airport and 32 km from the nearest Laem Chabang deep sea port.

As a leading manufacturer, the new factory will design and manufacture precision components for a range of industries including automotive, aerospace, medical, electronics and home appliances. Products will



include Extension springs, Compression springs, Wire forms, Stamping, Insert molding, Insert collars, KATO® CoilThread® and LOCKONE®.

Advanex (Thailand) have achieved relevant industry accreditations IATF16949, ISO9001:2015 and ISO14001:2015.

In the picture: Mr. Vivat Jiratikarnsakul (center left), Chief Operating Officer, WHA Industrial Development PLC exchanged the signed contract with Ms. Katherine Foo Yoke Khan (center right), Regional Managing Director, Advanex(Singapore) Pte Ltd. Also present were Mr. Saksit Turongsomboon (3rd right), Managing Director, Advanex (Thailand) Ltd.; Ms. Siyaphas Chantachairoj (far left), Director-Corporate Marketing, WHA Corporation PCL and Mr. Apisak Kamwan (2nd left), Assistant Director-Industrial Land Customer Development, WHA Industrial Development PLC.

Brose (Thailand) Inks Land Purchase Deal with WHA Industrial Development

Brose (Thailand), an innovative German manufacturer of mechatronic systems for the automotive industry, recently signed a land purchase agreement with WHA Industrial Development PLC for its new plant at WHA Eastern Seaboard Industrial Estate 2 (WHA ESIE 2) in Chonburi province. This second facility in Thailand, in addition to another plant in the Eastern Seaboard Industrial Estate (Rayong), will help boost the company's production capacity to meet increasing demand by international car makers.



In the picture: Mr. Denis Reul (centre right), Managing Director of Brose (Thailand), exchanges the land purchase agreement with Mr. David Nardone (centre left), Group Executive Industrial and International, WHA Industrial Development PLD, in the presence of Mr. Apisak Kamwan (left), Assistant Director-Industrial Land Customer Development, WHA Industrial Development PLC, and Ms. Thankamon Nonthasin (right), Executive Assistant at Brose (Thailand).

CONGRATULATIONS

WHA Group Congratulates K.W. Metal Work on First Trading Day

Mr. Vivat Jiratikarnsakul (2nd left), Chief Operating Officer-Industrial and International, and Mr. Apisak Kamwan (far left), Assistant Director, Industrial Land Customer Development of WHA Industrial Development PLC, congratulate Mr. Fkapan Vanagosoom (3rd right), Chairman of K.W. Metal Work PCI (KWM), during KWM's first trading day on the Stock Exchange of Thailand (SET). With its factory strategically located in Eastern Seaboard Industrial Estate (Rayong) within the Eastern Economic Corridor (FCC), KWM is Thailand's leading manufacturer of agricultural machineries, equipment and spare parts.



Iharanikkei Chemical (Thailand) Holds Grand Opening Ceremony for New Factory at WHA EIE (Map Ta Phut)

Iharanikkei Chemical (Thailand) Co., Ltd. a leading player in the chemical industry, recently celebrated the grand opening ceremony of its new factory at WHA Eastern Industrial Estate (Map Ta Phut), located in the Eastern Economic Corridor (EEC). Its state-of-the-art facility will enable the company to expand its production capacity to meet the growing demand of its clients in the region.



In the picture: Mr. David Nardone (right), Group Executive Industrial and International, WHA Industrial Development PLC, hands over a portrait of H.M. the late King Bhumibol Adulyadej to Mr. Satoshi Yamanashi (left), Managing Director, Iharanikkei Chemical (Thailand) during the grand opening ceremony.

Grand Opening Ceremony for AKWEL Plant at WHA ESIE 1

AKWEL, an automotive components manufacturer from France, recently celebrated the grand opening of its first plant in Thailand, strategically located at WIIA Eastern Seaboard Industrial Estate 1 (WIIA ESIE 1) in Rayong province. With almost a hundred employees, the 5,700 m² site will produce complex hoses and offer competitive solutions for its international clients in the automotive industry.



In the picture: Ms. Lada Mahutthanasakul (2nd right), Manager-Industrial Land Customer Development, WHA Industrial Development PLC, hands over a portrait of His Majesty the late King Bhumibol Adulyadej to Mr. Lertchai Sopa (2nd left), General Manager of the AKWEL plant, in the presence of Mr. Ryan Patrick Brown (left), AKWEL Sales Director, and Ms. Patthaya Mungkorn (right), Manager-Corporate Marketing, WHA Industrial Development PLC.

WHA Group Hosts Community Visit to Forge Closer Ties

Over 80 Participants Joined the 2-day Petchaburi Trip with Social, Cultural, Historical and Environmental Highlights



WHA Group is a staunch believer that community engagement can take a variety of forms. One of the activities that the company organizes with the aim of strengthening the bonds among its stakeholders is the yearly Community Visit, which started in 2008. This year, over 80 participants across WHA staff, Rayong and Chonburi administration officials, and members of the neighboring communities signed up for the much-awaited outing that took place in November 2018.

The 6-hour drive took them to the province of Phetchaburi, known for its beautiful scenery, temples and sweet specialties. The first stop was the Laem Phak Bia Royal Project, initiated by HM the late King Bhumibol Adulyadej. Here, the group walked through the mangrove forest and a fertile wetland that attracts beautiful and colorful varieties of birds. They also observed the systems and technologies set in place to help address waste and wastewater issues in a natural, environmentally-friendly way. That evening, a Hawaiian-themed dinner put everyone in the party mood, with good food and entertainment, fun games and great prizes!

The highlight of the second day was a visit to Mrigadayavan Palace, the former seaside residence of King Rama 6, built by Italian architect Ercole Pietro Manfredi, based on the King's own sketches. The architectural design combines both Thai and Western influences and the palace is registered as a national heritage site.

The visit to Phetchaburi would not have been complete without a stop to sample the famous desserts such as Khanom Mor Gaeng (coconut custard with mung beans) and Foi Thong ('golden threads') that the province is known for. The atmosphere throughout the trip was relaxed, informal and friendly, with many memorable moments of camaraderie.

This year's Community Visit gave all participants **an excellent opportunity** to make new friends, build closer bonds and explore beautiful places of the country together.



2019 Blood Donation Calendar

Date	Location
17 January 2019	ESIE
21 March 2019	WHA EIE
25 April 2019	ESIE
18 July 2019	WHA EIE
20 August 2019	ESIE
12 December 2019	WHA EIE



For more information, please call the Provincial Red Cross Chapter of Rayong Office on 038 870 235

WHA Group Supports Chulalongkorn's Faculty of Engineering

WHA Group recently donated 200,000 THB to Chulalongkorn University's Faculty of Engineering for the establishment of the Professor Aroon Sorathesn Center of Excellence in Environmental Engineering. Designed to become a world-class facility equipped with advanced tools and innovative technology, the center will focus on environmental research and development to boost environmental sustainability in the country. The contribution aligns with WHA Group's

corporate social responsibility (CSR) goals to ensure better lives for future generations.



In the picture: Mr. Wisate Chungwatana (5th right), Chief Executive Officer of WHA Utilities and Power PLC hands over the cheque to Assoc. Prof. Dr. Supot Teachavorasinskun (5th left), Dean of Chulalongkorn University's Faculty of Engineering, in the presence of Assoc. Prof. Dr. Khemarath Osathaphan (4th left), Head of the Department of Environmental Engineering at Chulalongkorn University, and Mr. Vivat jiratkansakul (4th right), Chief Operating Officer-Industrial and International, WHA Industrial Development PLC.

WHA Industrial Development Receives AMCHAM Gold Status CSR Excellence Recognition Award



WHA Industrial Development PLC (WHA ID) recently received 'Gold Status' during the CSR Excellence Recognition Award 2018 held by the American Chamber of Commerce in Thailand (AMCHAM). This latest recognition honored the company's social responsibility programs and sustainable initiatives for local communities in Thailand's Eastern Economic Corridor (EEC) for the 9th consecutive year.

In the picture: Mr. Peter Haymord (6th right), Chargé d'Affaires ad interim at the U.S. Embassy in Bangkok, presents the Gold AMCHAM CSR 2018 Excellence Recognition Certificate to Ms. Siyaphas Chantachairoj (6th left), Director-Corporate Marketing, WHA Corporation PCL. and Mr. David Nardone (5th left), Group Executive Industrial and International, WHA Industrial Development PLC.

WHA Group 6th Art Camp Trip to Promote Kids' Creativity



For the 6th consecutive year, WHA Group, led by Ms. Siyaphas Chantachairoj, Director-Corporate Marketing, WHA Corporation PCL, held the Art Camp for Mayathom 1-3 students from seven public schools in the Eastern Economic Corridor. During the 3-day activity, the children visited Wat Khao Tabae, Nong Kho reservoir and



the aerated lagoon in WHA Chonburi Industrial Estate 2 (WHA CIE 2) to draw creative inspiration for their artworks. The team of instructors from Inspiresight outlined the fundamentals of colors, shapes and styles while highlighting the importance of art in the children's daily lives.

2019 Training Program

WHA Training Center, Eastern Seaboard Industrial Estate (Rayong) January-December 2019

No.	Course	Time	No. of Participant	Course/person (Bath)	Jan'19	Feb'19	Mar'19	Apr'19	May'19	Jun'19	Jul'19	Aug'19	Sep'19	Oct'19	Nov'19	Dec'19
1	Operation Technique of Forklift Truck	9:00-16:00	30	1,800	Fri,25	Fri,15	Fri,15	Fri,19	Fri,24	Fri,21	Fri,19	Fri,16	Fri,20	Fri,18	Fri,15	Fri,20
2	Health, Safety and Working Environment Committee (HSE)	9:00-16:00	40	2,000	Mon-Tue 28-29 Tue-We		Tue-Wed 19-20		Wed-Thu 15-16		Tue-Wed 23-24		Tue-Wed 17-18		Tue-Wed 19-20	
3	SAFETY OFFICER : SUPERVISOR LEVEL	9:00-16:00	30	2,000	Tue-Wed 15-16	Tue-Wed 12-13		Tue-Wed 23-24		Tue-Wed 18-19		Tue-Wed 20-21		Tue-Wed 15-16		Tue-Wed 17-18
4	SAFETY OFFICER : MANAGEMENT LEVEL	9:00-16:00	30	2,500					Tue-Wed 7-8				Tue-Wed 10-11			
5	Welfare Committee in the workplace	9:00-16:00	30			Tue,26				Fri,7				Fri,11		
6	First Aid & CPR Course	9:00-16:00	30	1,600		Fri,8			Fri,10			Fri,9			Fri,8	
7	Defensive	9:00-16:00	30	2,000			Wed,6				Thu,4					
8	Service minc for maid	9:00-16:00	30	2,000	Fri,18						Tue,9					
9	Leadership Development	9:00-16:00	30	2,000		Thu,21						Thu,8				
10	7 Supervisor skill	9:00-16:00	30	2,000				Tue,2						Tue,8		
11	Excellent Supervisor	9:00-16:00	30	2,000						Fri,14						Thu,19
12	Excellent Arts of Supervisory skill	9:00-16:00	30	2,000					Thu,23				Fri,13			
13	E.Q. for Great Supervisor	9:00-16:00	30	2,000					Fri,17						Wed,6	
14	Positive thinking for Supervisor	9:00-16:00	30	2,000			Tue,12					Thu,15				
15	Communication skill for leader	9:00-16:30	30	2,000		Fri,1					Tue,2					
16	Leadership for Leader	9:00-16:30	30	2,000			Fri,8						Fri,5			
17	Train the trainer	9:00-16:30	30	2,000					Mon,6						Tue,5	
18	Excel for HR	9:00-16:00	15	2,000			Thu,14					Tue,27				
19	Excel for warehouse	9:00-16:00	15	2,000					Tue,28					Thu,10		
20	Microsoft Excel2016 : Basic levelk	9:00-16:00	15	2,000	Thu,24						Fri,12					
21	Microsoft Excel2016 :Intermediate level	9:00-16:00	15	2,000		Thu,7						Wed,14				
22	Microsoft Excel2016 :Advanced level	9:00-16:00	15	2,000			Tue,26						Tue,24			
23	Microsoft Powerpoint2016 :Intermediate-Advance	9:00-16:00	15	2,000					Fri,3					Thu,24		
24	Microsoft Word2016 Intermediate-Advance	9:00-16:00	15	2,000						Tue,25					Thu,21	

**ติดต่อสอบถามรายละเอียดเพิ่มเติมได้ที่คุณวรรณภา : ศูนย์ฝึกอบรมต้นตองไฮไฮ อี.ซี 3301 7224-6 แฟกซ์ 0 3301 7223 E-mail : wannaw@whc-group.com
 **ลูกค้าต้นตองไฮไฮ ส่วนลด 10%
 **ราคาค่าลงทะเบียนยังไม่ได้รวมภาษีมูลค่าเพิ่ม7% รวมเอกสารประกอบการอบรม อาหารว่างและอาหารกลางวัน
 **ค่าลงทะเบียน สามารถหักภาษี ณ ที่จ่าย 3%
 **สมัครเข้าร่วมอบรม กรุณาส่งใบสมัครล่วงหน้าอย่างน้อย 2 สัปดาห์ ก่อนถึงวันจัดอบรม-ของแต่ละหลักสูตร
 **วัน เวลาการจัดอบรม อาจมีการเปลี่ยนแปลงบ้างตามความเหมาะสม

Other Training Programs

WHA Training Center, Eastern Seaboard Industrial Estate (Rayong) January-December 2019

No.	Course	Time	No. of Participant	Jan'19	Feb'19	Mar'19	Apr'19	May'19	Jun'19	Jul'19	Aug'19	Sep'19	Oct'19	Nov'19	Dec'19
1	TOEIC Test at ESIE	9:00-12:00 13:00-16:00	50		Thu,28			Fri,26		Thu,20		Fri,23		Thu,3	Fri,13

Remark: For more information or reservation of TOEIC Test, please contact CPA Tel.0 2260 7061 , 0 2259 3990

WHA's strategic locations for your investment



50+ Locations in Thailand

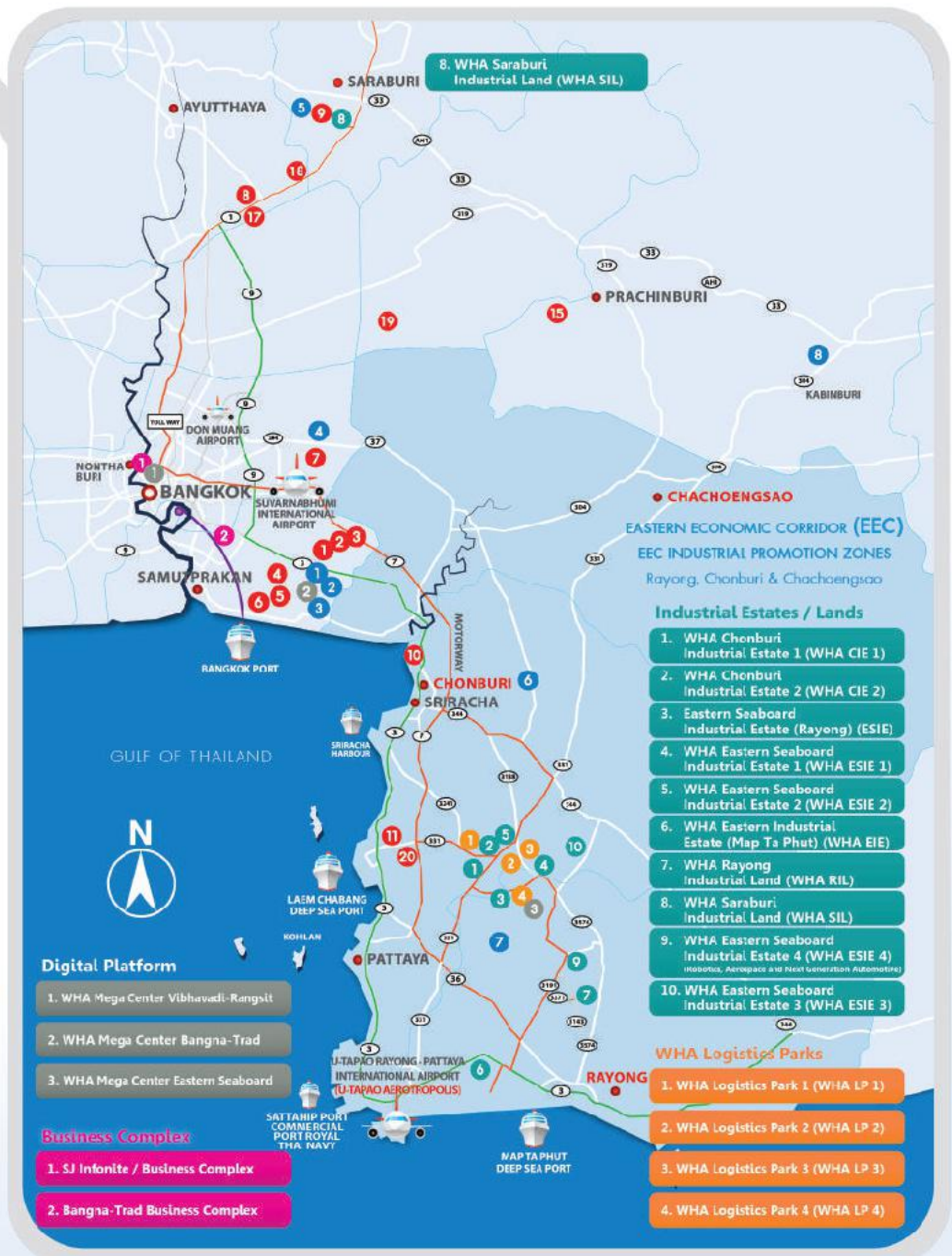
- 10+ Industrial Estates
- Eastern Economic Corridor (EEC)
- Built-to-Suit Factories & Warehouses
- Ready Built Factories & Warehouses

Warehouse Farm

1. WHA Mega Logistics Center Bangna-Trad km.18
2. WHA Mega Logistics Center Bangna-Trad km.19
3. WHA Mega Logistics Center Bangna-Trad km.23 (2 Phases)
4. WHA Mega Logistics Center Chonlaharnpichit km.3 (2 Phases)
5. WHA Mega Logistics Center Chonlaharnpichit km.4
6. WHA Mega Logistics Center Chonlaharnpichit km.5
7. WHA Mega Logistics Center Ladkrabang
8. WHA Mega Logistics Center Wangnoi 61
9. WHA Mega Logistics Center Saraburi
10. WHA Mega Logistics Center Panthong, Chonburi (2 Phases)
11. WHA Mega Logistics Center Laemchabang
12. WHA Mega Logistics Center Rama II, km.35
13. WHA Mega Logistics Center Lampoon
14. WHA Mega Logistics Center Khon Kaen
15. WHA Mega Logistics Center Kabinburi
16. WHA Mega Logistics Center Suratthani
17. WHA Mega Logistics Centers Wangnoi 61 Phase 2
18. WHA CENTRAL Mega Logistics Center Wangnoi 63
19. WHA Mega Logistics Center Lum Luk Ka
20. WHA Mega Logistics Center Laemchabang 2

Built-to-Suit Factories and Warehouses

1. Consumer Goods Distribution Center
2. Healthcare Air-Con Distribution Center
3. Hazardous Goods Distribution Center
4. Ladkrabang Logistics Center (2 Phases)
5. Diaper Manufacturing
6. Consumer Goods Distribution Center
7. Aerospace Manufacturing
 - Motorbike Manufacturing
 - Automation & Robotics
 - Aerospace Factory
8. WHA Ready Built Factory Park 1 @ HI-tech Kabin



Digital Platform

1. WHA Mega Center Vibhavadi-Rangsit
2. WHA Mega Center Bangna-Trad
3. WHA Mega Center Eastern Seaboard

Business Complex

1. SJ Infante / Business Complex
2. Bangna-Trad Business Complex

EASTERN ECONOMIC CORRIDOR (EEC)
EEC INDUSTRIAL PROMOTION ZONES
Rayong, Chonburi & Chachoengsao

Industrial Estates / Lands

1. WHA Chonburi Industrial Estate 1 (WHA CIE 1)
2. WHA Chonburi Industrial Estate 2 (WHA CIE 2)
3. Eastern Seaboard Industrial Estate (Rayong) (ESIE)
4. WHA Eastern Seaboard Industrial Estate 1 (WHA ESIE 1)
5. WHA Eastern Seaboard Industrial Estate 2 (WHA ESIE 2)
6. WHA Eastern Industrial Estate (Map Ta Phut) (WHA EIE)
7. WHA Rayong Industrial Land (WHA RIL)
8. WHA Saraburi Industrial Land (WHA SIL)
9. WHA Eastern Seaboard Industrial Estate 4 (WHA ESIE 4) (Robotics, Aerospace and Next Generation Automotive)
10. WHA Eastern Seaboard Industrial Estate 3 (WHA ESIE 3)

WHA Logistics Parks

1. WHA Logistics Park 1 (WHA LP 1)
2. WHA Logistics Park 2 (WHA LP 2)
3. WHA Logistics Park 3 (WHA LP 3)
4. WHA Logistics Park 4 (WHA LP 4)



Logistics Hub

Thailand's No.1 Built-to-Suit Logistics Facilities Developer who Pioneered this New Concept in the Market since 2003



Digital Hub

Proactive in Providing Comprehensive Data Solutions and Digital Platforms to Leading MNCs and Thai Companies

WHA GROUP...
YOUR ULTIMATE SOLUTION PARTNER

A FULLY - INTEGRATED LOGISTICS AND INDUSTRIAL ESTATE DEVELOPER



Industrial Hub

Thailand's No. 1 Industrial Estate Developer with Largest Market Share since 2008

Located in the **EEC Industrial Promotion Zones** in particular Aviation & Logistics, Next-generation Automotive, Automation & Robotics, Smart Electronics, Biofuels and Biochemicals, and Digital.



Utilities and Power Hub

Sole Supplier of Water and Other Utilities Infrastructures to Provide Security to Industrial Estates' Customers and Strong Partnership with Leading Power Operators

Email: marketing@wha-group.com
Tel. +66 (0) 2 753 3750, +66 (0) 2 719 9555



WHA
Industrial Estate



WHA

Eastern Seaboard Industrial Estate



**Eastern Economic Corridor (EEC) Special Promotion Zone for
Robotics, Aviation, Logistics and Next Generation Automotive**

- Strategic Location for Automotive, High Technology, Aerospace, Consumer Products, and Other Industry
- Near Laem Chabang Deep Sea Port
- 10 KM. to Eastern Seaboard Industrial Estate (Rayong) and WHA Eastern Seaboard Industrial Estate 1
- 8 KM. to Highway 344

WHA Industrial Development Plc.
T. 662 719 9555 www.wha-industrialestate.com
Email: marketing@wha-group.com